

DEFENCE AND SPACE  
Intelligence

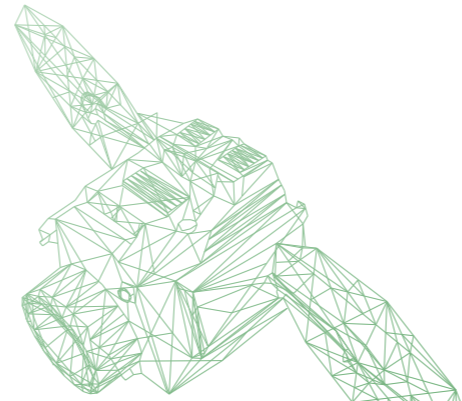
# Pléiades Neo for Mapping

Trusted Intelligence

AIRBUS

# Pléiades Neo is the next generation Earth Observation constellation from Airbus that will revolutionise mapping.

Only half of the Earth's land surfaces are covered by topographic mapping and many of these maps are outdated or inaccurate. In our constantly changing environment where information is key, having accurate fresh mapping is vital for many applications.



## Accurate Large Scale Mapping

Providing 30cm resolution combined with the most accurate geolocation, Pléiades Neo brings a significant level of information required for precise large-scale mapping in a military or civilian context.

### Use Cases:

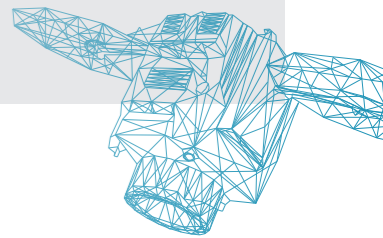
- Distinguish the height of man-made structures to gain an in-depth knowledge of urban environments
- Distinguish roof shape for green roof or solar panel implementation
- Create a cadastral or mapping database

## Fresh Product Layers

The intraday revisit provided by our 4 identical satellites enables rapid acquisitions allowing frequent updates for any product layer.

### Use Cases:

- Monitor your critical sites on a daily basis
- Enhance your change detection algorithm results
- Assess the impact of damage from natural disasters or human activities



## Reliable 3D Models

Pleiades Neo's agility ensures multi-stereo acquisitions in one single pass, which is essential in building topographic maps. These acquisitions combined with the **Pixel Factory Neo** capabilities provide accurate and reliable 3D models.

### Use Cases:

- Military mission preparation
- Smart city promotion
- 3D mapping

The **Pixel Factory Neo** can process a wide range of product layers such as DSM, DTM, Ortho Images, True Ortho Images, Cloud-free mosaics, point clouds, 3D TIN models from aerial and satellite sensors.



## Rapid, seamless coverage over large areas

For your **large and seamless imagery mosaics**, Pleiades Neo's agility and collection capacity, along with Airbus' unmatched satellite tasking commitment, ensures extensive coverage delivered in a short timeframe.



## Get the best in class orthorectified imagery

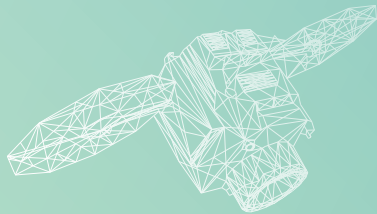
Whether you need to map a country, a city, produce very accurate orthorectified imagery or get Digital Elevation Models, Airbus has developed a comprehensive portfolio dedicated to mapping over the

last 20 years, making us one of the global leaders within this market. Pléiades Neo will reinforce this position by offering the best sub-metric, accurate and updated DEM.



### Pléiades Neo Key Features

-  **30 cm resolution**
-  **Massive acquisition capacity**
-  **Value-added products**  
Designed using our dedicated production lines
-  **Revisit frequency**  
Twice daily, anywhere, to monitor your city
-  **Geolocation accuracy**  
<5m CE90



### Main Applications

-  **Land administration/cadaster**
-  **City mapping (very large-scale)**
-  **Monitoring and alert of change**
-  **Smart cities**
-  **Land use/land cover mapping**
-  **Urban planning**
-  **Monitoring of project progress**

Airbus Defence and Space  
Australia, Brazil, China, Finland, France,  
Germany, Hungary, Singapore, Spain,  
United Kingdom, United States

🐦 @AirbusSpace

www.intelligence-airbusds.com

Pléiades Neo simulation over Shirakawa ©Courtesy of PASCO  
Pléiades Neo simulation over Dakar ©

This document is not contractual.  
Subject to change without notice.  
All rights reserved.

# AIRBUS